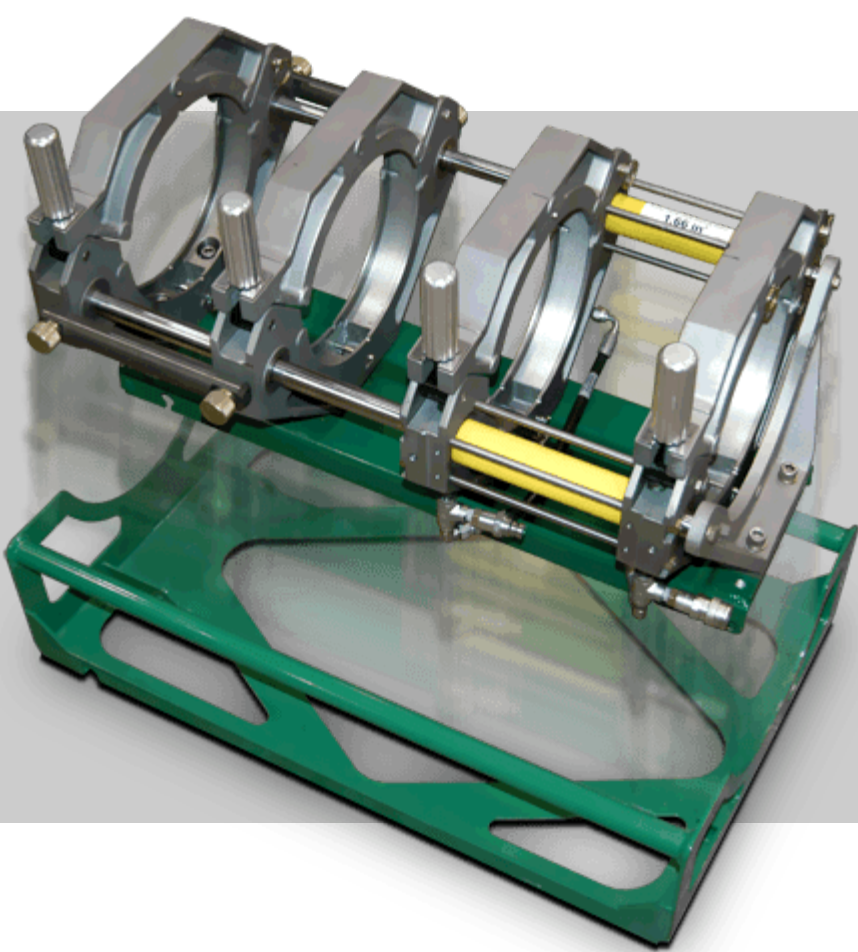


DynaMc®

BIG POWER, SMALL PACKAGE

Perfect for in-ditch and close-quarter butt fusion, the DynaMc line of machines pack a lot of power into a small package. They combine the robust, patented features of standard McElroy equipment into smaller units for use in tight working environments. They are available in 2- and 4-jaw units that easily detach from the cradle to further reduce the footprint of the machine. The DynaMc is a great choice on challenging jobsites when only a few fusions need to be made. It is offered in three pipe size ranges, from as small as 2" (63mm) up to 12" (340mm).



MODULAR & COMPACT DESIGN

ADAPTS FOR CLOSE-QUARTER FUSION

The DynaMc consists of a carriage, facer, facer stand, heater and insulated heater stand, all of which can be situated in various arrangements to allow flexibility in confined working environments. Each of the components have a compact design with space limitations in mind. The DynaMc is available in 2- and 4-jaw configurations. On 4-jaw units, the full-length guide rod and unique movable third jaw allow work in close proximity to ells and tees without the removal of the outer jaw.

MULTIPLE MACHINE OPTIONS

HAND PUMP & ELECTRIC PUMP MODELS AVAILABLE

DynaMc HP (Hand Pump) machines butt fuse pipe with hand-powered pumps while the DynaMc EP (Electric Pump) is powered by a common hydraulic power unit (HPU). This same HPU can be used with many other DynaMc machines. The HPU also uses a hydraulic accumulator to maintain fusion pressures and reduce power consumption.



DATALOGGER® COMPATIBLE

RECORD & ANALYZE JOINT DATA

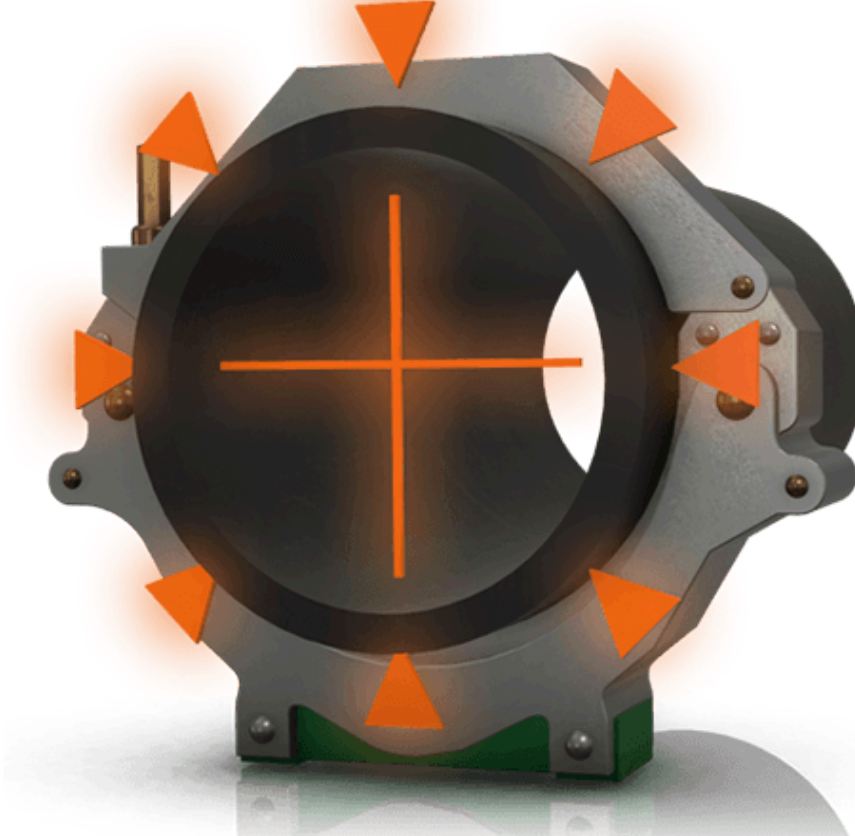
All of the DynaMc machines sync with the McElroy DataLogger, a handheld computer that records and documents the key parameters of the fusion process. These joint records are used to verify that proper fusion procedures have been followed prior to installation, which is a growing jobsite requirement. Joint records from the DataLogger can be stored and analyzed in the Vault™, a secure server on the internet. This allows quick and easy sorting, tagging and sharing of joint records by machine, joint, operator, device or job.

[Learn More](#)

CONSISTENT JOINT QUALITY

CENTERLINE GUIDANCE PROVIDES EQUAL DISTRIBUTION OF FORCE

Centerline Guidance is a balanced force system that is unique to all McElroy machines. This patented feature places the centerline of the pipe clamping jaws on the same plane as the pipe's centerline. The force applied during the fusion passes through the center of the pipe, giving an equal distribution of force around the diameter of the pipe, resulting in an even, continuous bead formation and quality joint.



INDUSTRY-LEADING WARRANTY

GUARANTEED PERFORMANCE

McElroy equipment is built to withstand the tough environments our industry encounters. We're confident that your machine will perform to the best of its capabilities. We've even given each piece of equipment a 5-year warranty — the longest available in the industry.

[Learn More](#)

ADDITIONAL FEATURES

	DynaMc HP	DynaMc EP & HPU
Patented Centerline Guidance System for equal distribution of force around the joint	✓	✓
On four-jaw units, the full-length guide rod and unique moveable third jaw allow work in close proximity to ells and tees without the removal of the outer jaw	✓	✓
Serrated jaws and inserts keep pipe from slipping during fusion process	✓	✓
Detachable easy-lift cradle for improved maneuverability to and from worksite	✓	✓
Utilizes a hydraulic accumulator to maintain fusion pressure and reduce power consumption		✓
ISO-compliant industrial Teflon-coated heater plates	✓	✓
Powerful electric facer that can be loaded from either side of the carriage	✓	✓
Double-action hand pump and high-velocity cylinders create fast carriage speeds during fusion processes	✓	
2-jaw machine availability	✓	✓
DataLogger® compatible	✓	✓
Features a common Electric Pump that powers a variety of fusion machines		✓

MODELS

Select a machine below for more detailed specifications and model-specific features.



DYNAMC® 250
2" IPS - 8" DIPS (63mm - 250mm)
Big Power, Small Package

[Learn more about DynaMc® 250](#)



DYNAMC® 28
2" IPS - 8" DIPS (63mm - 225mm)
Big Power, Small Package

[Learn more about DynaMc® 28](#)



DYNAMC® 412
4" IPS - 12" DIPS (110mm - 340mm)
Big Power, Small Package

[Learn more about DynaMc® 412](#)

FIND A DISTRIBUTOR NEAR YOU.

McElroy's industry-leading fusion equipment can be purchased from distributors around the globe. Find one close to you.

[Underground / Construction](#)

[Mechanical / HVAC / Plumbing](#)

